

# Pad Eye Lockouts



Part Code: PEL-1 and PEL-2

**Application:** Save on cost of Re-Certification by blocking the pad eye with a tamper proof sealed lockout device.

Use for recently certified Pad Eyes. When the Lockout seals unique number for each Pad Eye is listed in the Test Register, unnecessary Re-Certification for unused Pad Eyes may be avoided.

PEL-1 includes

- 2 small discs for hole sizes up to 30mm/1" (Disc diameter 60mm)
- 2 blue pull tight security seals

PEL-2 includes

- 2 medium discs (Disc diameter 120mm)
- 2 large discs (Disc diameter 160mm)
- 3 Security Seals (padlock type)
- 1 Aluminum Lockout Arm

<b>Material:</b>	UV Stable Polyethylene (Simona PE100 Black) Anodised Aluminium Security Seals - durable plastics Self Adhesive Vinyl Label (3M Vinyl)
<b>Manufacturer:</b>	CIRLOCK PTY LTD - Made in Australia.
<b>Other Info:</b>	PEL-1 suitable for hole size up 30mm (1") PEL-2 suitable for hole sizes up to 20-120mm (4")

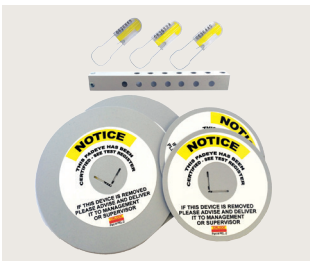
## Visuals:

**PEL-1 SET**



**PEL-1** suitable for hole size up 30mm (1")  
Disc diameter 60mm

**PEL-2 SET**



**PEL-2** suitable for hole sizes up to 20-120mm (4")  
Disc diameter 120mm and 160mm